

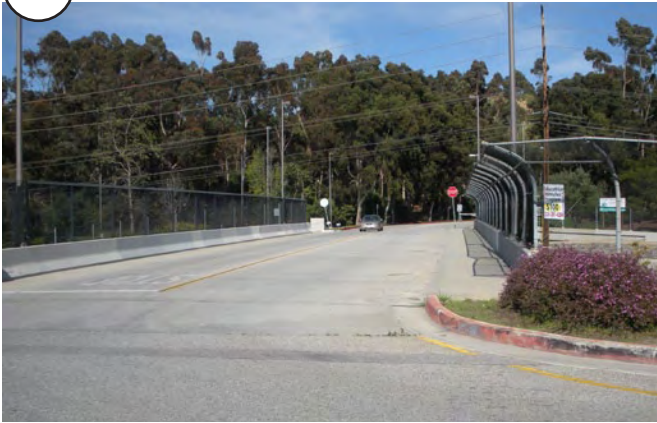
Segment 5: Blair Hills Corridor

Length: 5,221'

Connecting from Kenneth Hahn State Recreation Area to Baldwin Hills Scenic Overlook is the most important new connection envisioned in the Park to Playa Trail Feasibility Study. This includes improvements at the KHSRA entrance and the bridge across La Cienega, and envisions access across a private Plains Exploration and Production leased parcel to connect to undeveloped open space owned by the Baldwin Hills Resource Conservation Authority (BHRCA).

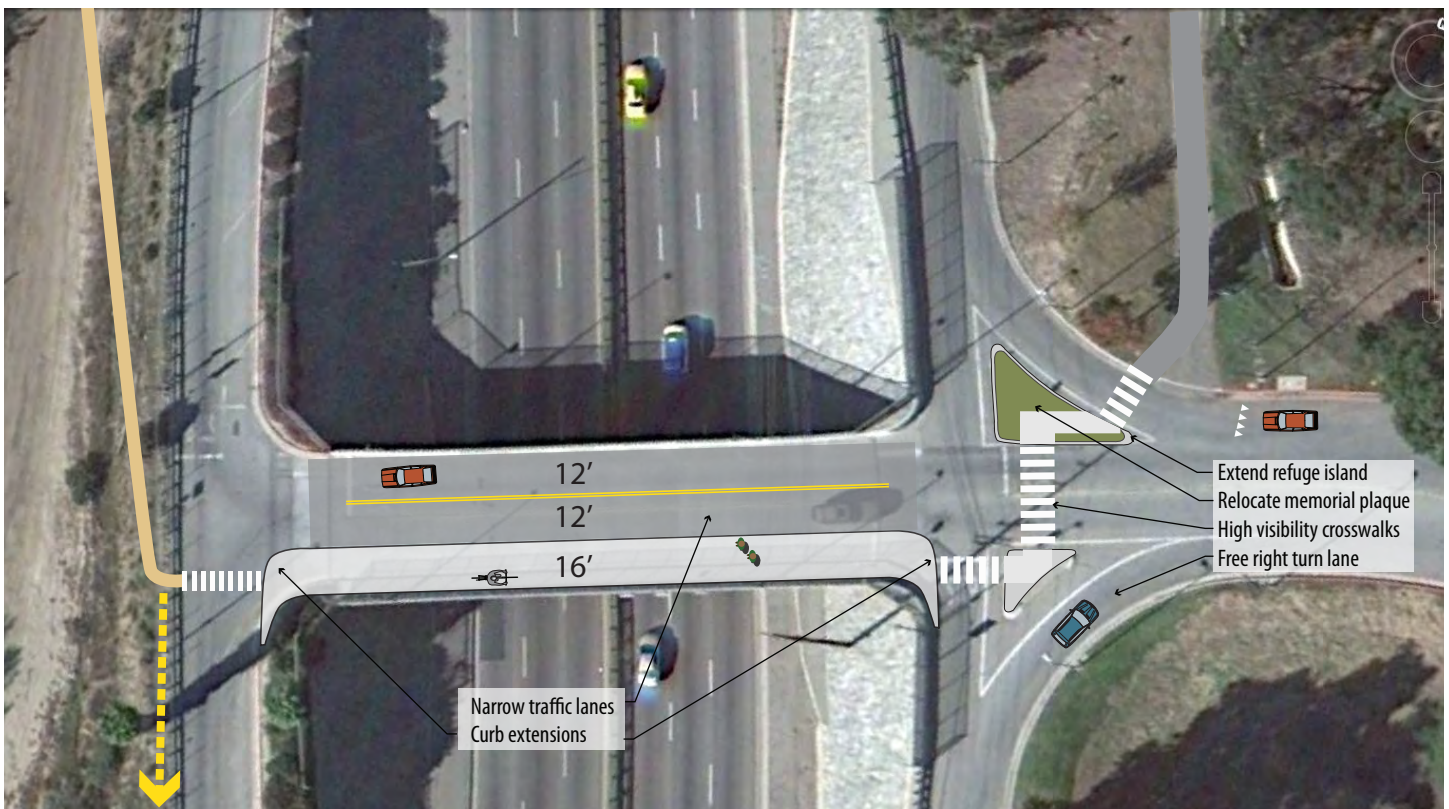
5.1

KHSRA Entrance and La Cienega Bridge Enhancements

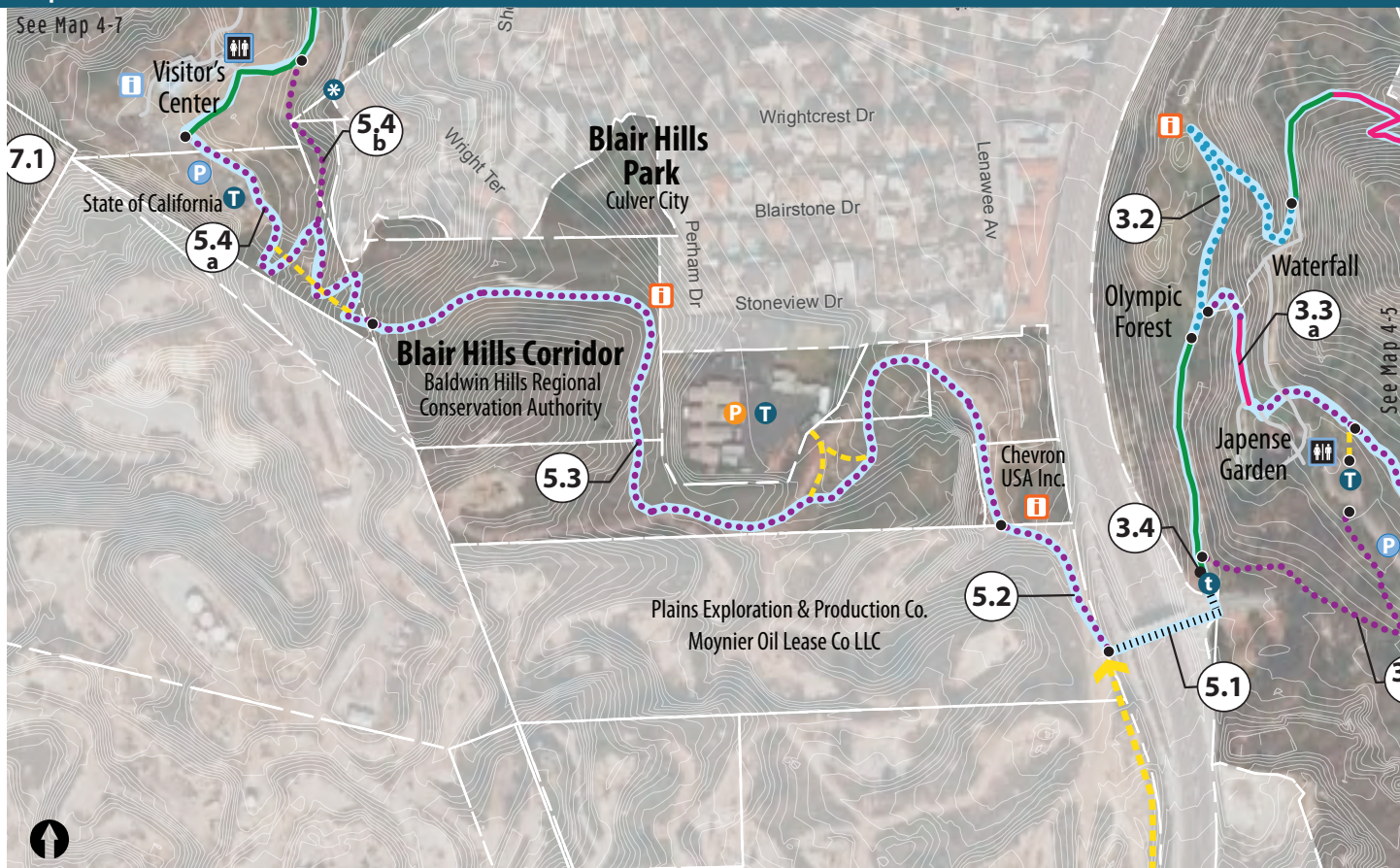


Looking east toward KHSRA, traffic lanes can be narrowed to provide a separated bike and pedestrian path.

- Extend pedestrian refuge island and plant with native landscaping. Relocate memorial plaque in island and incorporate in trail gateway design.
- High visibility crosswalks.
- Provide Class I multi-use path -OR- bike lanes and buffered sidewalk from adjacent traffic. Existing bridge width 40'. Coordinate non-motorized improvements and crossing improvements with Caltrans.
- As a long term project, provide a trail connection to KHSRA along west side of La Cienega Blvd from Ladera Heights.



Map 4-6: Blair Hills Corridor



- | | | | |
|------------------------|---------------------------|----------------------------|----------------------|
| Existing Trail | Existing Connector Trail | Existing Parking | Existing Restroom |
| Improve Existing Trail | Proposed Trail Connection | Proposed Parking | Proposed Restroom |
| Proposed Trail | Enhance Street Crossing | Existing Interpretive Site | P2P Trailhead |
| Planned Trail | Proposed Bridge | Interpretive Opportunity | P2P Gateway Entrance |
| Close & Restore Trail | Preferred Alignment | Segment End Points | P2P Access |

5.2 Trail Easement through PxP/Moynier Oil Lease Co. LLC Property

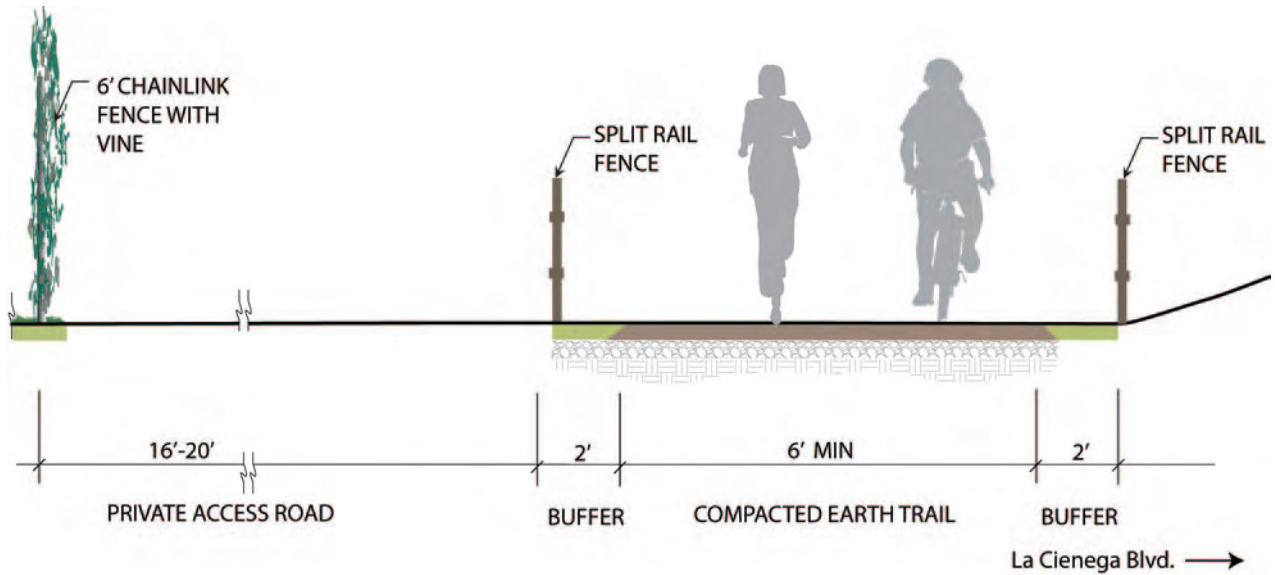


Trail improvement concepts are subject to negotiation of access rights with property owner:

- New trail through former oil production property may entail environmental issues.
- Trail ramps down from frontage road to existing gravel service road.
- Trail continues on east side of existing 16' to 20' wide access road – separated with black vinyl chain-link security fence, potentially planted with vines to provide screening. See Section on next page.
- Opportunity to interpret oil extraction process and related geology.

Segment 5: Blair Hills Corridor

5.2 Trail Easement through Moynier Oil Lease Co. LLC Property - Section



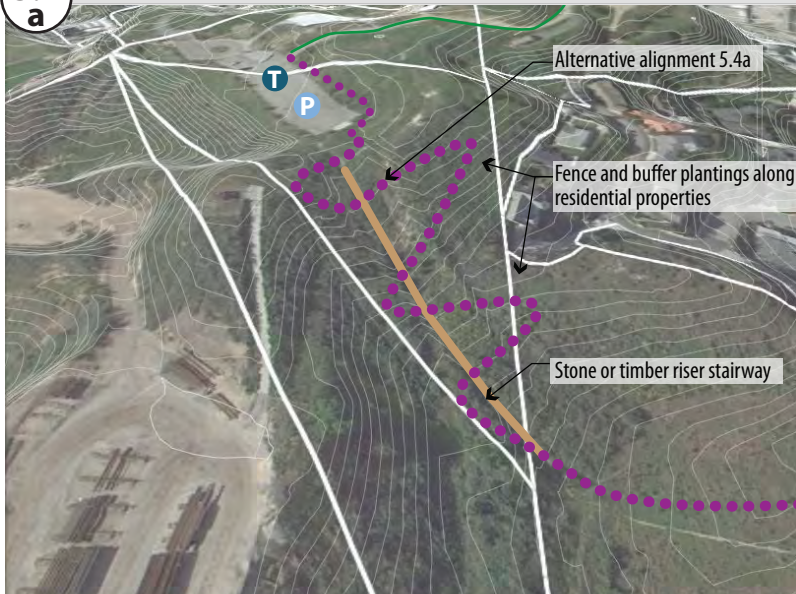
Proposed section through private PXP property.

5.3 Blair Hills Trail



- Extend trail through chaparral area.
- Provide setback, fence and native vegetation as a buffer along residential properties.
- Potential access from the Ohr Eliyahu Academy property to the regional trail will be further studied in conjunction with a project initiated by BHRCA. The governing board of BHRCA has stated its intention to acquire the Ohr Eliyahu Academy property, subject to final consummation of the transaction by the BHRCA and Academy boards. A community input process will be performed for this trail and connection after the acquisition is final.

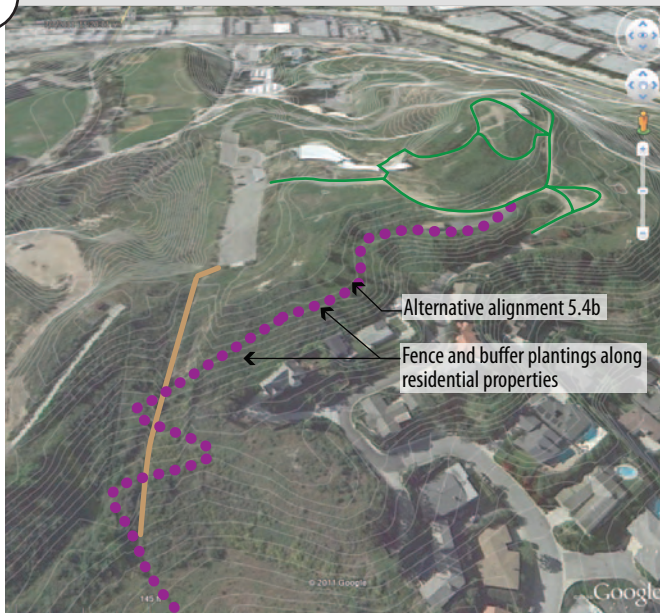
5.4 a Trail Connections to BHSO Trail (Alternative a)



- Trail with switchback or climbing turns up steep slope to BHSO. Approx 1,025' elevation change.
- Provide barrier plantings to minimize trail users creating short cuts.
- Stone or timber riser staircase provides direct access to top of slope.
- Restore habitat in other disturbed areas as compensation for trail disturbance.
- Provide setback, fence and native vegetation as a buffer along residential properties.
- New trail around north east area of parking area.
- Gate at BHSO access point to control public access before and after park hours (8:00 a.m. to sunset).

*Additional study by an engineering geologist needed to determine alignment

5.4 b Trail Connections to BHSO Trail (Alternative b)



- Alternative b minimizes the number of switchbacks and follows the contours around the back side of BHSO to meet existing trails within the park.
- Provide barrier plantings to minimize trail users creating short cuts.
- Stone or timber riser staircase provides direct access to top of slope.
- Restore habitat in other disturbed areas as compensation for trail disturbance.
- Provide setback, fence and native vegetation as a buffer along residential properties.
- Gate at BHSO access points to control public access before and after park hours (8:00 a.m. to sunset).

*Additional study by an engineering geologist needed to determine alignment